

## Prof. Arnon Karnieli

The Remote Sensing Laboratory  
Jacob Blaustein Institutes for Desert Research  
Ben-Gurion University of the Negev  
Sede-Boker Campus 84990, ISRAEL  
Tel: +972-8-6596855 Mobile: +972-52-8795925  
Fax: +972-8-6596805  
E-mail: [karnieli@bgu.ac.il](mailto:karnieli@bgu.ac.il)



## פרופ' ארנון קרניאלי

המעבדה לחישה מרחוק  
המכונים לחקר המדבר ע"ש יעקב בלאושוטיין  
אוניברסיטת בן-גוריון בנגב  
קמפוס שדה-בוקר 84990  
טלפון: 08-6596855 נייד: 052-8795925  
פקס: 08-6596805

<http://www.bgu.ac.il/BIDR/research/phys/remote>

*Science from Above*

September 9, 2019

Dear colleagues,

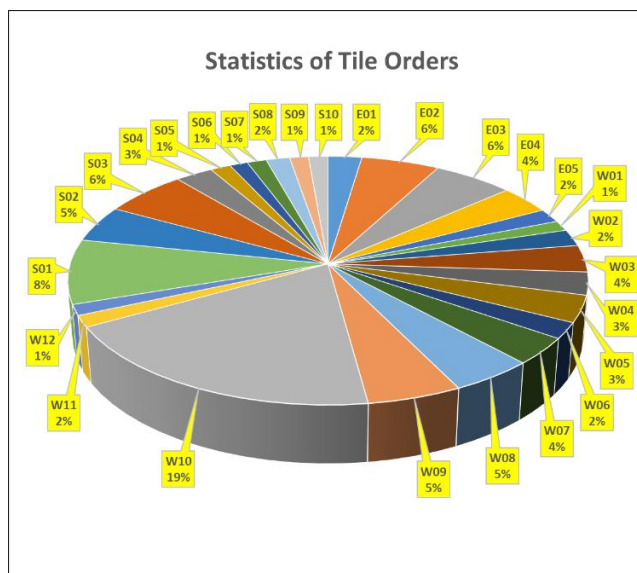
Re: VEN $\mu$ S periodic news – September 9, 2019

### 1 VEN $\mu$ S image processing updates

We continue processing the VEN $\mu$ S L2 (after atmospheric correction at 5 m resolution). Such products are available on the website from June 2019. Additionally, we are reprocessing the archived images. By now, we have updated the website with L2 Q2 5 m for the month of Nov. and Dec. 2017. The reprocessing assignment is a slow procedure, by routinely continue. However, in order to advance studies over the most downloaded tile, i.e., W10, the L2 Q2 5m products for this tile, from Nov. 2018 until end of May 2019, are added to the website.

### 2 Statistics of tile orders

The pie chart below shows the percentage of tiles ordered by the Israeli end-users until the end of August 2019. The W10 tile was the most used one.



### 3 Feature study using VEN $\mu$ S

#### Preliminary products from VEN $\mu$ S (KM4) and Sentinel-2 MSI at corn and soybeans in Southwestern Michigan, USA

By: Pietro Sciusco (sciuscop@msu.edu) and Jiquan Chen (jqchen@msu.edu)  
Landscape Ecology & Ecosystem Science (LEES) Lab, Michigan State University



Figure 1: Study area (left), corn field (middle); soybeans field (right).

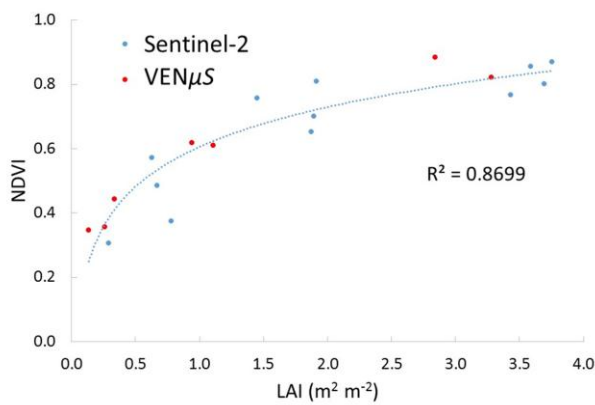


Figure 2: Changes in NDVI of Sentinel-2 and VEN $\mu$ S with leaf area index (LAI) at five study sites in the Kalamazoo Watershed of Southwest Michigan, USA.

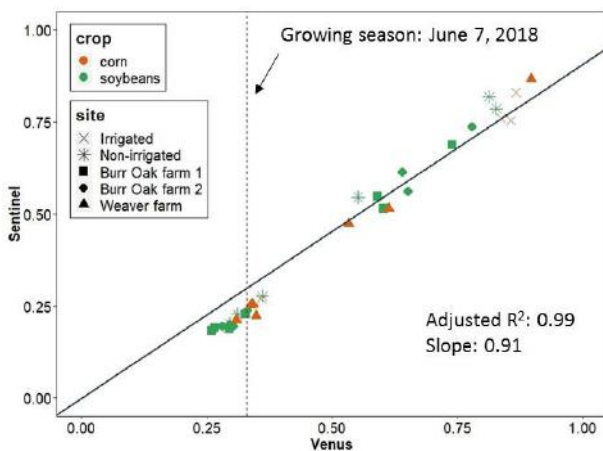


Figure 3: Empirical relationship between NDVI derived from Sentinel-2 and VEN $\mu$ S at five study sites in Kalamazoo Watershed of SW Michigan, USA.



Best wishes, happy and VEN $\mu$ S productiver year, ,  
Manuel and Arnon

